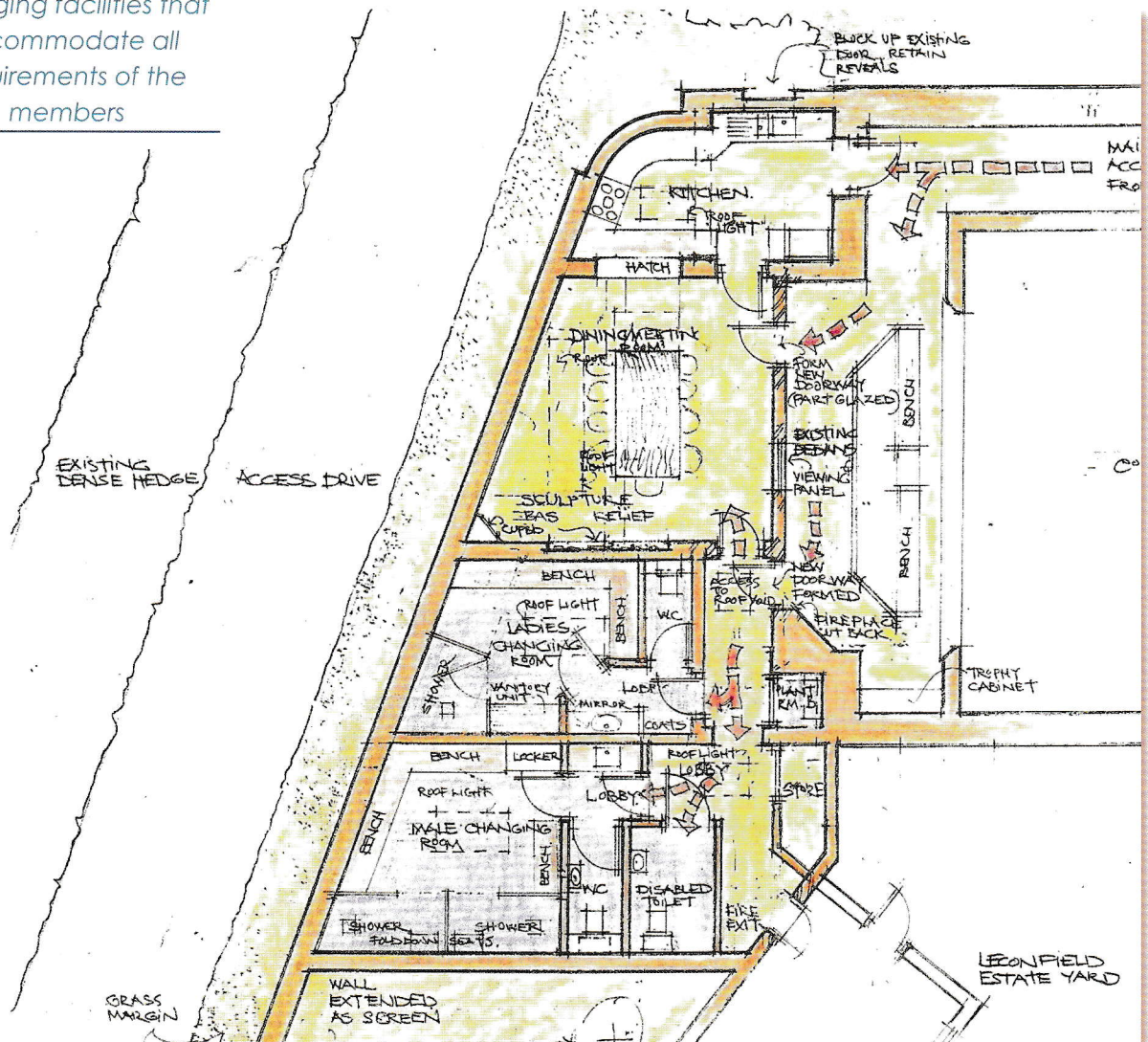


## Your Questions Answered





## CHAIRMAN'S INTRODUCTION

For some time the Board has been conscious that the Club's facilities were wholly inadequate bearing in mind that our membership now comprises so many female and junior members.

So I am absolutely delighted to announce that agreement has been reached with Lord & Lady Egremont and our landlord, the National Trust, to have an extension built at the west end of the court. This will enable the Club to have new and separate changing facilities for men and women, and a significantly larger clubroom and kitchen. The Board believes that these facilities are in keeping with the existing character of the Club and are affordable.

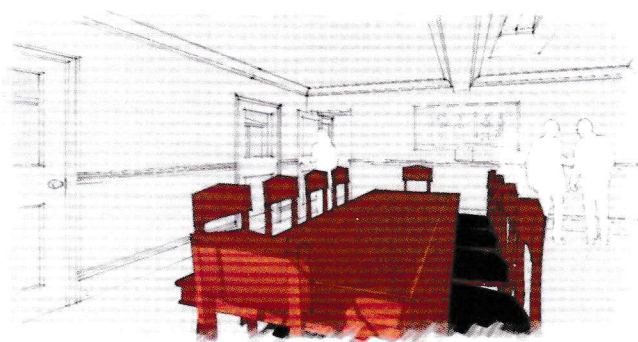
---

*"I'm absolutely delighted to announce that we have reached this agreement" – Philip Robinson*

---

The National Trust will be sharing the project management with PHTC and our side will be covered by Mike Steward and David Fortune. The plans (which are covered further in this Newsletter) will provide you with a good idea of what is proposed. The early thinking behind the new facilities is set out below.

Because of the need to allow time to obtain all the necessary permissions and to cause minimum disruption to our playing season, we are aiming to start building in April 2015 so that it is ready in time for the 2015/16 season (we are expecting that the court will be playable during building as the area behind the dedans will be sealed off). At this stage our best estimate is that the project will cost in the region of £300,000 and so that we receive the most competitive price the construction contract will be put out to tender to at least three reputable firms.



*Dining and entertaining and location of the bas-relief*

Although the National Trust will oversee the building of the extension, it will be the Club's responsibility to provide all the funding for the project. This in turn will be reflected in the amount of rentals we pay under a new long lease to be negotiated with the National Trust.

We are exploring a number of grant options but the bulk of the funding will come from our members. We have decided not to impose a mandatory levy as we feel that members should donate in accordance with their means.

I am happy to advise that the Directors between them are prepared to donate £50,000 and that the Vice Presidents have been even more generous. In addition a number of members have already shown a willingness to donate which is enormously appreciated. Details of the funding arrangements are set out later in this Newsletter and a Pledge Card is enclosed for those who would like to donate. I hope that you will be as generous as you can.

So that Gift Aid is available to us from these donations, donations are to be made to the Sir John Ritblat Family Foundation for which I am extremely grateful to Sir John.

I am also most grateful to Philip Jackson, generally regarded as the leading sculptor in the country and a member of the club, for agreeing to sculpt and donate a bas-relief for the club-room, details of which are included in this newsletter.

Finally I would like to express my deep appreciation to Lord & Lady Egremont and the National Trust for allowing us to proceed with this extension which I have no doubt will hold the Club in good stead for many years to come and create a lasting legacy.



## Developing the Vision

The club boasts an incredibly wide and varied membership base which makes up its friendly nature and long term success. Within our ranks we have many who have offered their help and experience in getting the project this far and to assist in its implementation.

In this next section, Mike Steward explains more of the rationale for the design as well as the key features of the changes.

## Our Design Aims

The plans have been drawn up in conjunction with the National Trust, the Estate and ourselves. There were a number of key aims;

1. To provide separate changing facilities for men and women and to allow juniors to use them during their coaching and tournament days. These changing rooms would be accessed via a new door at the far end of the dedans to avoid the clubroom being used as a passageway.
2. To increase the size of the clubroom and kitchen to better facilitate the catering for players and supporters on match and tournament days.
3. To leave the dedans area largely unaltered to retain its very special ambience, and to include two viewing windows from the clubroom to the dedans and court.
4. To respect the privacy needs of the Egremont family by having a high wall along the west end of the build. All natural light and ventilation will be provided via roof lanterns in the flat roof extension.
5. To provide a scheme and design that was in keeping with the existing character of the court and the surrounding Grade 1 buildings.
6. To ensure that the project was affordable bearing in mind that the members would be responsible for financing it.

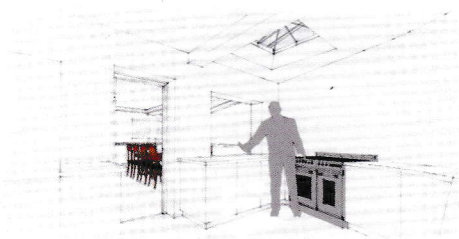
## The Extension in Detail

Once the external plan of the extension was established it was possible to create the following facilities. For those of you with an eye for detail, the thinking is set out below.

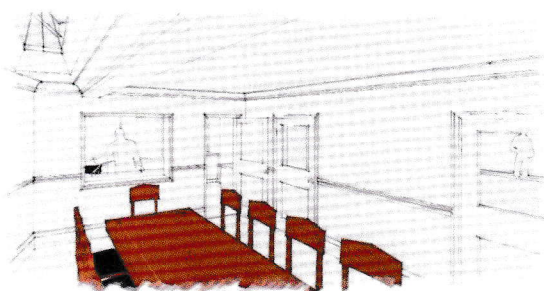
### Kitchen

The kitchen will be around thirteen square metres, and will no longer be a passageway.

The kitchen will be brought into the 21<sup>st</sup> century with induction hobs, two ovens and a drinks corner by the door to the dedans. A 1½ sink unit with an 'insinkerator' with under cupboards for a dishwasher and refuse separation. Units below and above the hatch way to the club-room will provide space for cutlery, china and glasses to be accessible from both sides if possible. The floor will be a vinyl natural oak style board with a 20 year warranty.



### Clubroom



The clubroom is nearly doubling in size to twenty six square metres.

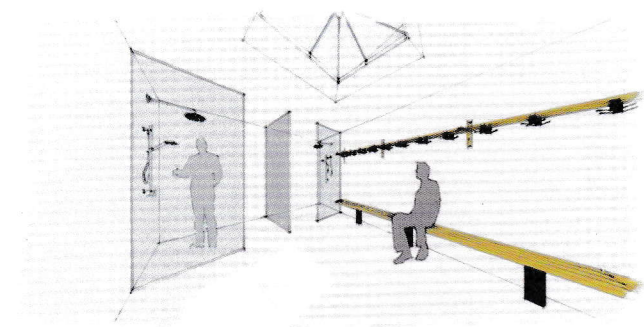
We will need to plan the layout of the clubroom carefully, but our aim is to be able to seat fourteen to eighteen people with easy access to the table and seating. An area where members can relax with a cup of coffee and a newspaper will be created.

The floor will be an oak laminate.



## Changing Rooms

Both changing rooms will have high quality showers with both overhead and hand held sprays. The floors will be in light coloured slate or stone to maximise the natural light. The benches will be of similar design to the current ones.



The ladies changing room will be spacious with around seventeen square metres.

This room will have a large single shower and drying area as well as a benching and a vanity unit. There will also be a lobby with basin and access to a separate WC.

The men's changing room will be nearly four times the size of the existing room.

There will be two large showering and drying areas in the new changing room and about six metres of bench space. The new changing room will be accessed from a lobby which has a basin and separate WC.

## Disabled Facilities

There is disabled access and disabled facilities which are easily accessed from the passageway.

## Easy Access to Changing

A new door at the end of the dedans will provide access to the changing rooms.

## Fire Door

A new fire/disability door will create access into the estate yard rather than through the garden as now.

## The Exterior Wall

The extension is to be set behind a high stone wall, constructed in the same stone used for Petworth House and the relatively recent works forming the terrace and flank wall immediately on the south side of the house. The sandstone is quarried from the Kings Quarry in Midhurst and is Sussex Sandstone, grey/green taken from the Hythe bed.

## The Generosity of our Members and Friends

A significant amount of time and effort needs to be devoted to projects such as these to start with a vision and turn that into something tangible that is actually able to be delivered. The Club is blessed with members who are only too willing to help, either through their efforts, skills and time or with their financial support towards this project.

As of this moment in time, there have been a number of incredibly generous offers of donations which have enabled this project to get well underway and have a great chance of success.

We have also been very kindly offered a unique piece of work by one of our members and world renowned sculptor, Philip Jackson. Philip will create a sculpture in the form of a bas-relief to be featured on the wall of the new club-room. More information about Philip is included below, but for those of you, who will be coming to our Summer Drinks Party at Champs Hill on 31<sup>st</sup> May, will have the chance of meeting him and his wife, Jean. At the Summer Party, Philip has kindly agreed to say a few words about the sculpture that he is planning for our club-room.

## Store Cupboard

There will be a new larger store cupboard of two square metres and the old cupboard in the dedans will become the trophy cabinet.

## Heating & Lighting

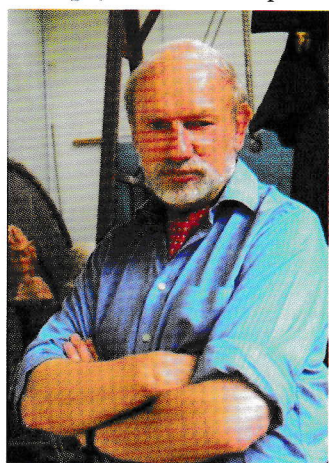
Heating will be provided by a new gas boiler which is sufficient for all of the showers and hot water for the kitchen and under floor heating in the changing rooms.

All lighting will be recessed LED lights with sensors in appropriate positions.





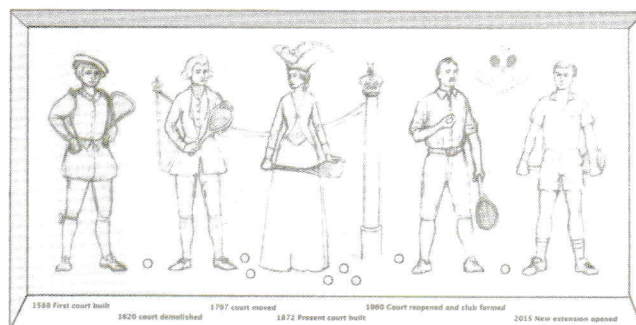
**Philip Jackson** has produced some of Britain's best known public sculptures including the figure of the late Queen Elizabeth, The Queen Mother for her National Monument in the Mall, which was unveiled by HM The Queen in 2009. In 2012 The Queen also unveiled Philip's sculpture which formed the central feature of a memorial to the 55,500 men of Bomber Command (one of the aircrew pictured here) who died during World War II and can be seen in Green Park, London. Amongst his other works in London are The Gurkha Monument in Horse Guards Avenue, The Young Mozart in Orange Square, The In-Pensioners outside the Royal Hospital, Chelsea and the giant figure of Bobby Moore in front of the new Wembley Stadium. Outside London you can see the equestrian sculpture of HM The Queen in Windsor Great Park, the Falklands War sculpture for the Royal Marines at Portsmouth, St Richard outside Chichester Cathedral, Constantine the Great at York Minster and also Empress Elizabeth of Austria in Geneva.



His most recent sculpture of HRH Prince Philip, for the Crown Estate, was unveiled at Windsor Great Park last December.

Philip Jackson lives and works in West Sussex where he divides his time between producing gallery sculpture and public commissions.

Philip writes "With apologies for a rather poor sketch (not my forte but insisted on by our forceful Chairman) I show the general layout of a relief mural that will form the central decoration on one of the walls of the soon to be built splendid extension to the Tennis Club. The relief depicts some of the characters that may have graced the courts at Petworth since the first court was built in 1588. The lower part of the frame will record the key dates of tennis at Petworth (wording still to be finalised).



## Funding Arrangements

As was mentioned by Philip Robinson at the beginning of this Newsletter, there is a substantial amount of funding needed to make this project a success. The Board and the Fundraising Committee are confident that sufficient funds will be raised to finance this project.

There have been initial indications from some of you that you would be willing to provide a donation to support this project, for which we are most grateful, and as such we are on our way to meeting our funding needs. However, we still need generous support from you to reach our target funding level which will guarantee the future of the court now and for future generations.

Donations of £1,000 or more will be recognized (in a form to be agreed) under the following categories:

- Bronze Donor - £1,000 or more
- Silver Donor - £2,000 or more
- Gold Donor - £5,000 or more
- Platinum Donor - £10,000 or more
- Patron - £20,000 or more

To help us benefit further from your donations the Board has obtained the agreement of Sir John Ritblat to allow donations to go to the Sir John Ritblat Family Trust (Charity Number 262463) thus enabling Gift Aid to be available on all contributions. Donations to this project will be made to this Trust which in turn will pass on the full value (plus Gift Aid) to the National Trust. Please refer any queries in this respect to Robert Dolman.



## The Pledge Card

To ensure success of this project, and to help secure the long term future of the club the committee is asking that anyone who feels that they would like to make a donation towards this project should speak with Philip directly or feel free to complete the enclosed Pledge Card and send it to Philip Robinson.

For those of you who have already made a verbal pledge, please also complete the form and send it to Philip.

## How Gift Aid Works

Gift Aid is an easy way for a charity to maximize the value of its donations. A charity can reclaim tax from HMRC on the gross equivalent of donations. The basic rate of tax is 20% so for every £1 donated a charity can claim an extra 25p.

As an example;

A donation of £500 would give value to the charity of £625, and a donation of £1,000 would give value to the charity of £1,250.

Donors that are tax payers in the prevailing tax year are also able to recover tax relief on the donations they make

which reduces the cost of the donation. For example, this would apply for a higher rate tax payer;

A donation of £500 provides tax relief of £125 – meaning the cost to the donor is only £375, and a donation of £1,000 provides tax relief of £250 – meaning the cost to the donor is £750.

There is further information about Gift Aid on the HMRC website at: [www.hmrc.gov.uk/individuals/giving/gift-aid.htm](http://www.hmrc.gov.uk/individuals/giving/gift-aid.htm)

## Your Questions Answered

Q. Why do we need this extension?

A. Petworth members have enjoyed playing on one of the world's nicest courts which is steeped in history. However, as a facility we have lacked the necessary changing rooms to accommodate women and our younger players. We have made the most of our kitchen and dining areas to provide hospitality but always struggled for space. This extension will allow us to create and enjoy a fantastic facility in keeping with the friendly character of the club.

Q. Why is it so expensive?

A. The initial figure may seem expensive but this is just an estimate at this stage. We are expecting to gather formal and more accurate quotations over the next few months. The eventual cost may be less than currently estimated and we will know more very soon. Since PHTC is funding this extension as part of our new arrangements with the National Trust, we are expecting security of tenure for years to come at a favourable rent.

Q. Will my subscriptions be going up as a result of this investment?

A. No. As a result of the kind generosity of our members we expect to keep subscriptions as close as possible to current levels.

Q. Who is choosing the fixtures and fittings?

A. Mike Steward has a committee made up of members with experience in this field, who are David Fortune, Carolyn Armstrong-Smith, Carole Muir and Chris Clarke, to advise on items to purchase.

Q. Who is responsible for fundraising?

A. Philip Robinson has formed a committee made up of members to assist with fundraising, who are Robert Dolman, David Godfray, Andrew Falk, Carole Muir, Michael Power, Gordon Woodman and Nick Chambers.

Q. Will I still be able to play during the building work?

A. Hopefully yes. We are going to shutter off the works behind the dedans so that the court can remain in use. We hope to provide portable loo/changing facilities and will keep everyone informed as we get closer to the building programme in early 2015.

Q. What will the finish be like?

A. We will be providing more details as this project moves forwards but we are aiming for a high quality finish to the extension. Our ambition is to provide the very best experience in playing tennis at Petworth for members and visitors alike.

Q. Whilst these works are being carried out, what about the leaking roof?

A. We are hoping that the National Trust will take the opportunity to repair the leaks in the roof at the same time as the extension is being built. This will affect the court availability for a short amount of time. The costs of these roof repairs will be borne by the National Trust.